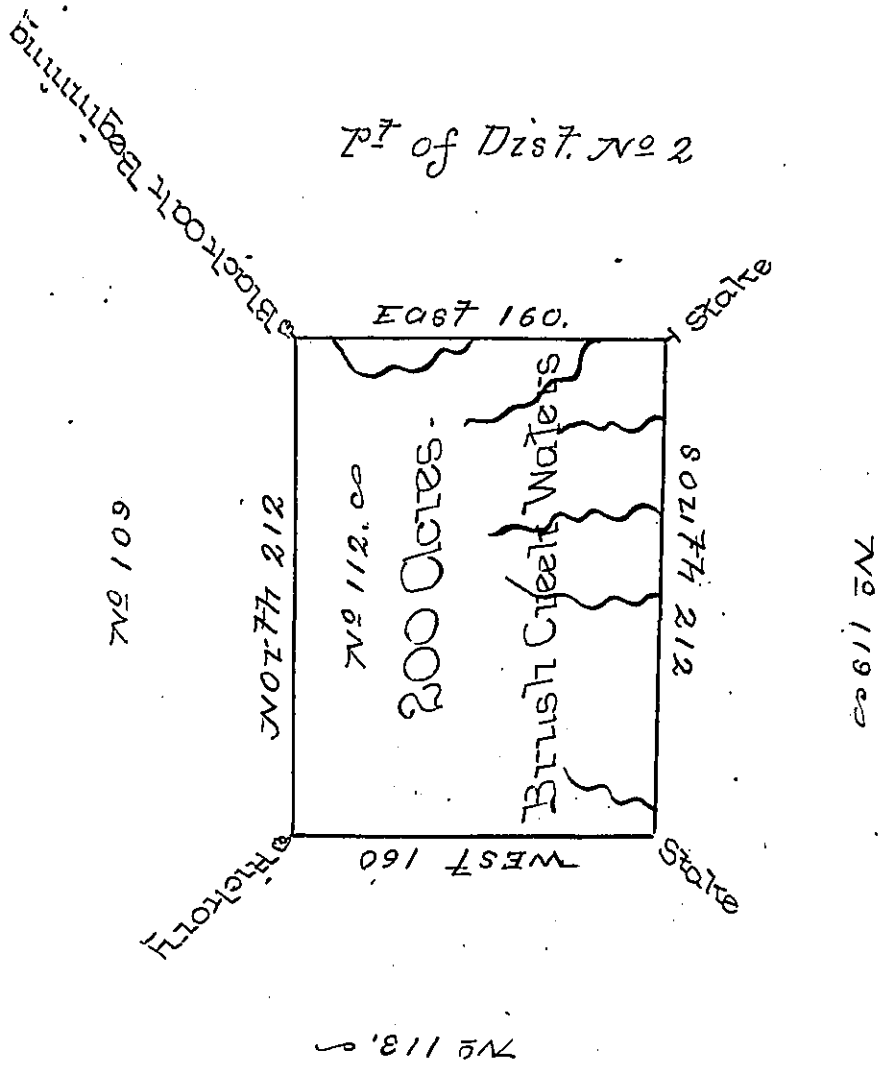


✓



The above is a Draught of a Survey made in the Month of July 1785 in Pursuance of instructions from the Surveyor General Dated January 22<sup>d</sup> 1785 situate on the North side of the Ohio River on the waters of Brush Creek in District No 2 Containing 200 Acres with Allowance of 6<sup>th</sup> Cent.

Done West U.S.

To John Lukens Esq: Sur: Gen:

IN TESTIMONY that the above is a copy of the original remaining on file in the Department of Internal Affairs of Pennsylvania, made conformably to an Act of Assembly approved the 16th day of February, 1833, I have hereunto set my Hand and caused the Seal of said Department to be affixed at Harrisburg, this fourth day of October 1898.

*James W. Latta*  
Secretary of Internal Affairs.